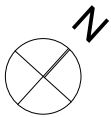
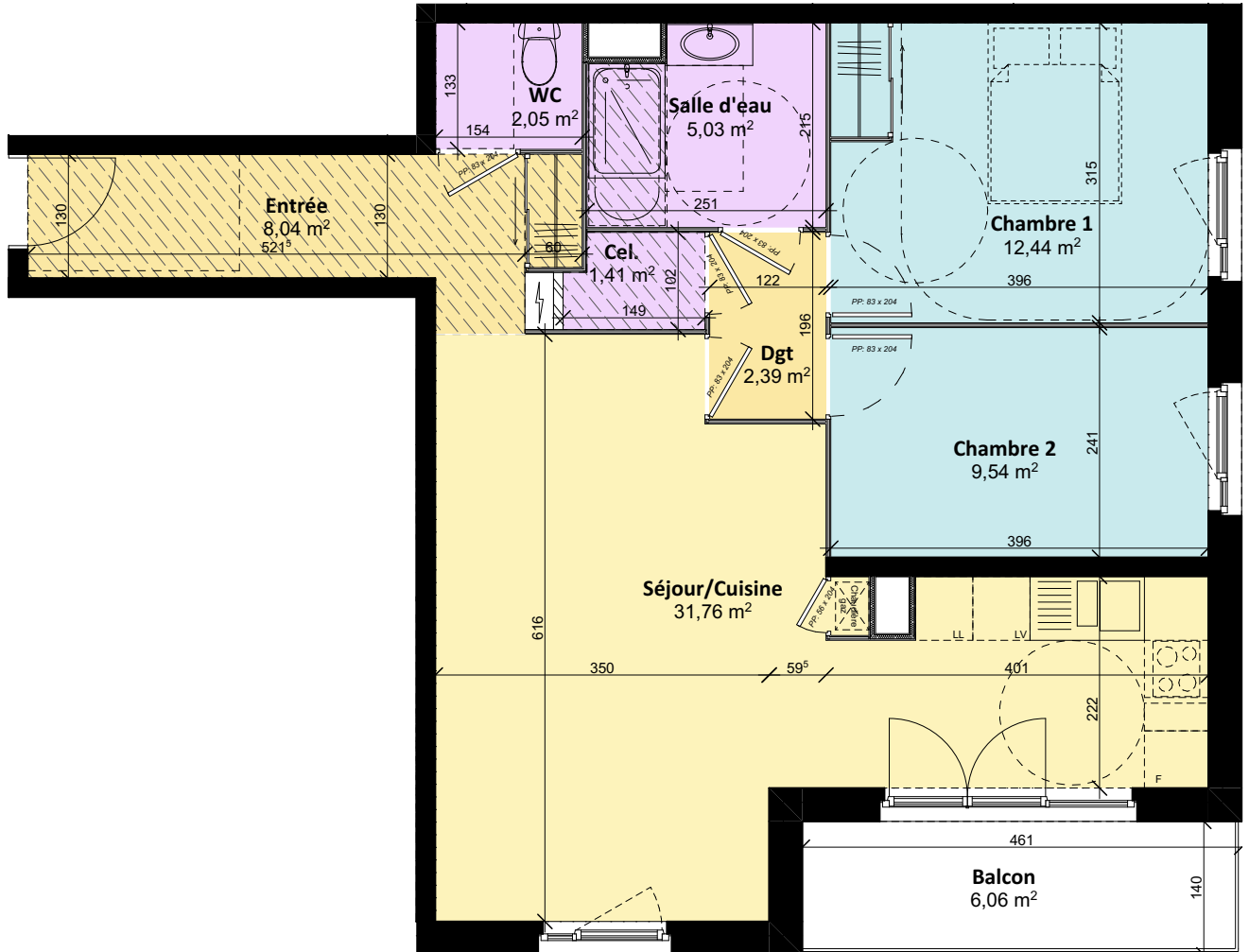
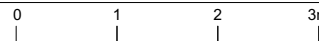


T3 - 303
72,66m²



Faux-plafond ou soffite



Indice 3

11 Juin 2019

APPARTEMENT n°303 3eme Étage Type T3	
Cel.	1,41
Chambre 1	12,44
Chambre 2	9,54
Dgt	2,39
Entrée	8,04
Salle d'eau	5,03
Séjour/Cuisine	31,76
WC	2,05
Surface habitable	72,66 m²
Balcon	6,06

